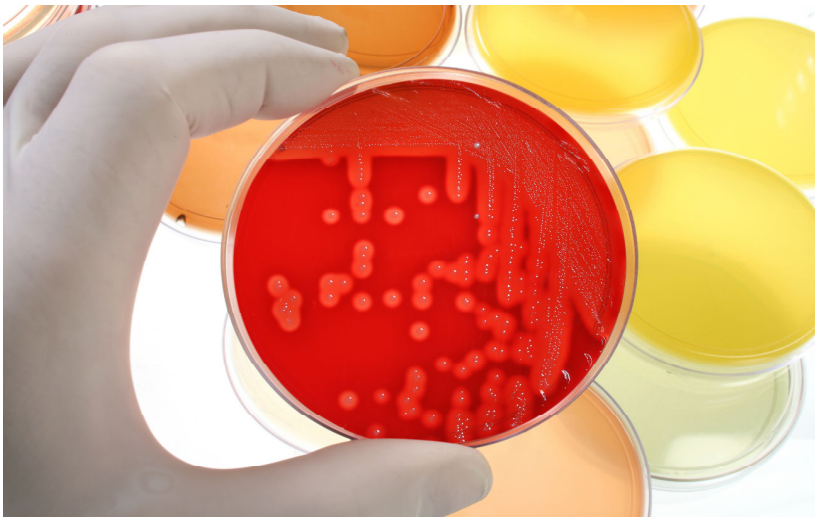


What's Spoiling Your Beer?



the MiL, Inc.

MICROBE INOTECH LABORATORIES, INC.



Detection, Identification, & Enumeration

Microbe Inotech Laboratories, Inc. (the MiL, Inc.) routinely performs rapid microbial identifications, confirmations, and tracks contaminant sources of all pathogenic, indicator, and spoilage organisms using the latest technologies such as GC FAME, Biolog, Ribotyping, VIDAS, VITEK 2, DiversiLab, and 16S rRNA base pair sequencing. Our computerized identification databases have over 3,500 microorganisms profiled and include all pathogenic bacterial strain subspecies, yeast and molds, and actinomycetes. Standard plate counts, bacterial species screening, meat speciation, antibiotic, histamine, food allergens, filth, pesticide, and toxin detections are also performed using the best available ELISA and HPLC methods. Chemistries can be performed on product samples and include: residue, proximates, fats and oils, minerals, metals, vitamin, and nutritional labeling analysis, compliant with AOAC, NELA, and FDA methods.

Rapid Turn-around

Accurate, consistent, and reliable results are delivered on time by our highly trained scientific staff which uses strict standard operating procedures, stringent performance standards and internal quality audits. Nationwide clients overnight express their strain cultures and samples in coolers for our rapid 24-48 hour identifications/confirmations of pathogens such as *Salmonella*, *Listeria*, *E. coli* O157:H7, *Campylobacter*, *Shigella*, and *Staphylococcus aureus*. Our sample cooler kits make it convenient for our clients to overnight samples to our lab for immediate testing the following morning.

About Microbe Inotech Laboratories, Inc.

Microbe Inotech has over twentyfive years of experience providing microbiological services to our customers. As your full service microbiological lab, we strive to provide excellence in microbiology and service through our five distinct laboratory sectors: environmental, food safety, industrial, pharmaceutical and governmental.

Merging Innovation & Technology

In an effort to solve problems related to microbial detection and identification, Microbe Inotech was founded in 1991 by Dr. Bruce C. Hemming. Dr. Hemming has more than 40 years of experience with research and development in plant pathology and advanced genetics, 10 of which involved microbiological research with Monsanto. For the past two decades, Microbe Inotech Laboratories, Inc. is proud to have offered many solutions to different issues involving microorganisms.

Detection, Identification & Enumeration

At Microbe Inotech Labs, we work with many top companies performing research and development as well as microbial testing and expert witness testimony. Our expansive databases contain profiles of thousands of species of microbes. Let our professionals complete your microbial diagnostic research and assist in the development of product solutions, reducing risk and saving you both time and resources.

**We are registered members and participants in
the following organizations:**



Microbe Inotech Laboratories, Inc.

11754 Westline Industrial Drive

St. Louis, Missouri 63146-3402

Phone: 314-645-2177

Fax: 314-645-2544

E-mail: info@microbeinotech.com



Visit us online at
www.microbeinotech.com